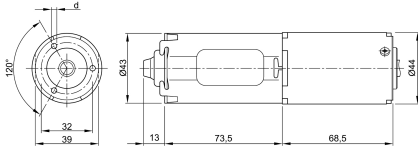


Design Data	
Commutation	Brushed
Direction of rotation	Bi-directional
Bearing type	A:Sleeve - B:Sleeve

0231 C



Performance data		
Rated voltage [V]	U_N	24
Nominal torque [Nm]	M_N	1.50
No-load speed [min^{-1}]	n_0	178.0
Nominal power [W]	P_N	20.0
Nominal current [A]	I_N	3.0
Nominal force [kN]	F_N	0.00
Duty cycle		s3

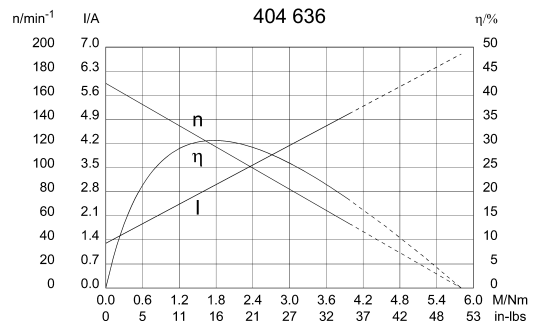
Sensor data	
Pulses	20
Output channels	2

Other data	
Gear ratio	20/1
Gear wheel material	plastic
Suppression components	$4\mu\text{H}$, 1nF
Enclosure class	IP 30
Weight [kg]	0.750

Remarks: $d = 3,3\text{mm}$, for self-cutting screw 4mm (shape Remform)

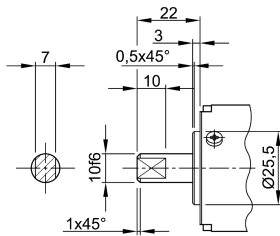
Characteristic curves

Motor picture

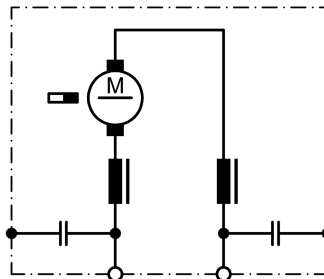


Output shaft drawing (W), Wiring diagrams (S) and Connector layout (K)

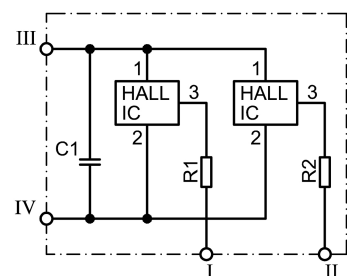
W 249



S 30



S 109



- I Terminal 1, OUT A1, grey
- II Terminal 2, OUT A2, black
- III Terminal 3, +, white
- IV Terminal 4, -, red

