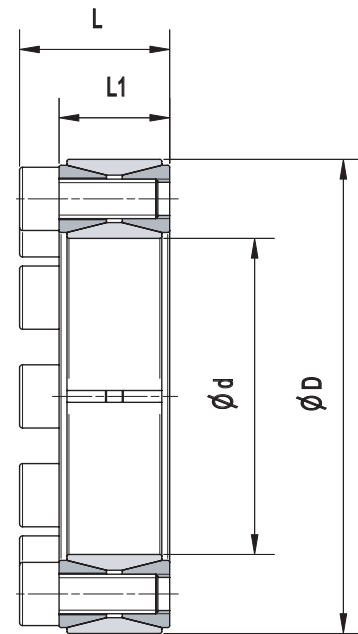


DIMENSIONS			SCREWS		PERFORMANCES					WEIGHT kg
d x D mm	L1 mm	L mm	size	Ma Nm	Mt Nm	Fax kN	Ps MPa	Ph MPa		
18 x 47	20	26	M6	8,8	150	17,0	82	31	0,2	
19 x 47	20	26	M6	8,8	160	17,0	78	31	0,2	
20 x 47	20	26	M6	8,8	160	16,9	74	31	0,2	
22 x 47	20	26	M6	8,8	180	16,8	67	31	0,2	
24 x 50	20	26	M6	8,8	220	18,8	69	33	0,2	
25 x 50	20	26	M6	8,8	230	18,8	67	33	0,2	
28 x 55	20	26	M6	8,8	290	20,7	66	34	0,3	
30 x 55	20	26	M6	8,8	310	20,6	62	34	0,3	
32 x 60	20	26	M6	8,8	390	24,7	69	37	0,3	
35 x 60	20	26	M6	8,8	420	24,5	63	37	0,3	
38 x 65	20	26	M6	8,8	540	28,5	68	40	0,3	
40 x 65	20	26	M6	8,8	560	28,4	65	40	0,3	
42 x 75	24	32	M8	21,4	940	44,9	83	47	0,6	
45 x 75	24	32	M8	21,4	1.000	44,7	78	47	0,5	
48 x 80	24	32	M8	21,4	1.000	44,6	73	44	0,6	
50 x 80	24	32	M8	21,4	1.100	44,4	70	44	0,6	
55 x 85	24	32	M8	21,4	1.400	51,6	74	48	0,6	
60 x 90	24	32	M8	21,4	1.500	51,3	68	45	0,7	
63 x 95	24	32	M8	21,4	1.800	58,4	74	49	0,7	
65 x 95	24	32	M8	21,4	1.800	58,3	72	49	0,7	
70 x 110	28	38	M10	44,0	2.900	84,3	81	51	1,2	
75 x 115	28	38	M10	44,0	3.100	84,0	75	49	1,3	
80 x 120	28	38	M10	44,0	3.300	83,6	71	47	1,4	
85 x 125	28	38	M10	44,0	4.000	95,2	76	52	1,4	
90 x 130	28	38	M10	44,0	4.200	94,9	72	50	1,5	
95 x 135	28	38	M10	44,0	5.000	106,0	76	54	1,6	
100 x 145	33	45	M12	74,0	5.800	117,0	74	51	2,1	
110 x 155	33	45	M12	74,0	6.400	116,0	67	48	2,3	
120 x 165	33	45	M12	74,0	7.900	132,0	70	51	2,5	



Code

- Ma: screws tightening torque
- Mt: transmissible torque, with Fax=0 kN
- Fax: transmissible axial load, with Mt=0 Nm
- Ps: contact pressure on shaft
- Ph: contact pressure in hub bore

Features

- Transmissible torque from 150 to 7.900 Nm
- Not self-centering, low self-locking
- Fixed axial hub position during tightening
- Two thrust rings with double taper design
- Low axial dimension
- Lubrication: food grade oil FDA approved class H-1
- Tolerances: shaft h11; hub bore H11
- Shaft and hub bore surface finish $0.8 \leq Ra \leq 3.2 \mu\text{m}$

Composition

- Slotted inner ring
- Slotted outer ring
- Double taper front thrust ring, with integrated pull-out tapped holes
- Double taper rear thrust ring
- Set of socket head cap screws, grade A2-70

Listed performances are valid as long as shaft and hub are made of stainless steel. Should these parts be made of different materials, listed values might not apply. Please consult MAV Technical Dept. for advise.

Information subject to change without prior notification, © MAV S.p.A.