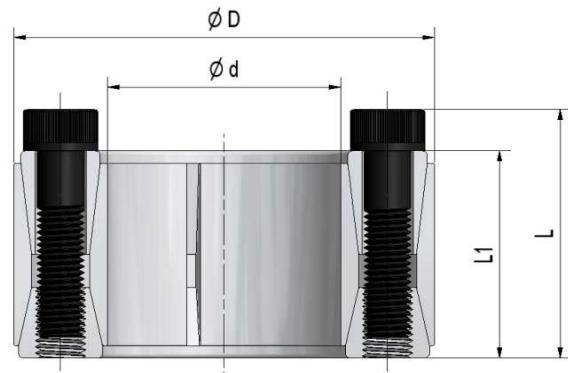
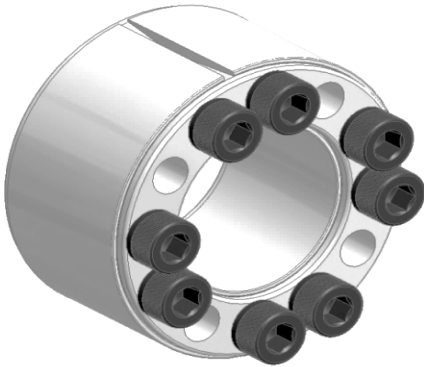


Locking Assembly MAV 2500

rev. 2



Medium-high torque capacity

Self-locking & self-centering

Axial fixation of hub during tightening: yes

Max tolerances: shaft h9; hub bore H9

Shaft / hub bore surface finish: $0.8 \leq Ra \leq 3.2 \mu m$

Ma: screw tightening torque

Mt: transmissible torque ($F_{ax}=0$)

Fax: transmissible axial load ($Mt=0$)

Ps: shaft pressure

Example of order: MAV 2500 - 70 x 120 (d x D)

| DIMENSIONS | | | | | SCREWS ISO 4762 - 12.9 | | PERFORMANCES | | | | WEIGHT |
|------------|---|-----|-----|-----|---------------------------|-----|--------------|-------|-----|-----|--------|
| d | x | D | L1 | L | size | Ma | Mt | Fax | Ps | Ph | kg |
| mm | | mm | mm | mm | | Nm | Nm | kN | MPa | MPa | |
| 45 | x | 85 | 50 | 60 | M 10 | 83 | 3.000 | 134 | 231 | 122 | 1,4 |
| 50 | x | 90 | 50 | 60 | M 10 | 83 | 3.300 | 134 | 208 | 116 | 1,5 |
| 55 | x | 95 | 50 | 60 | M 10 | 83 | 3.700 | 133 | 189 | 110 | 1,6 |
| 60 | x | 100 | 50 | 60 | M 10 | 83 | 4.000 | 132 | 173 | 104 | 1,7 |
| 65 | x | 115 | 62 | 74 | M 12 | 145 | 6.300 | 195 | 199 | 113 | 3,0 |
| 70 | x | 120 | 62 | 74 | M 12 | 145 | 6.800 | 194 | 185 | 108 | 3,1 |
| 80 | x | 130 | 62 | 74 | M 12 | 145 | 11.500 | 288 | 243 | 149 | 3,5 |
| 90 | x | 140 | 62 | 74 | M 12 | 145 | 12.900 | 286 | 216 | 139 | 4,0 |
| 100 | x | 160 | 80 | 94 | M 14 | 230 | 19.400 | 387 | 201 | 125 | 6,7 |
| 110 | x | 170 | 80 | 94 | M 14 | 230 | 24.700 | 449 | 213 | 138 | 7,2 |
| 120 | x | 180 | 80 | 94 | M 14 | 230 | 28.700 | 479 | 209 | 139 | 7,8 |
| 130 | x | 190 | 80 | 94 | M 14 | 230 | 31.000 | 476 | 193 | 132 | 8,3 |
| 140 | x | 200 | 80 | 94 | M 14 | 230 | 37.600 | 538 | 203 | 142 | 8,7 |
| 150 | x | 210 | 80 | 94 | M 14 | 230 | 42.500 | 567 | 201 | 143 | 9,3 |
| 160 | x | 230 | 94 | 110 | M 16 | 355 | 58.500 | 731 | 201 | 140 | 14 |
| 170 | x | 240 | 94 | 110 | M 16 | 355 | 65.600 | 771 | 200 | 142 | 15 |
| 180 | x | 250 | 94 | 110 | M 16 | 355 | 76.900 | 854 | 210 | 151 | 16 |
| 190 | x | 260 | 94 | 110 | M 16 | 355 | 84.900 | 894 | 209 | 153 | 17 |
| 200 | x | 270 | 94 | 110 | M 16 | 355 | 97.600 | 976 | 218 | 161 | 18 |
| 220 | x | 300 | 116 | 134 | M 18 | 485 | 117.000 | 1.070 | 181 | 133 | 27 |
| 240 | x | 320 | 116 | 134 | M 18 | 485 | 145.000 | 1.210 | 190 | 142 | 29 |
| 260 | x | 340 | 116 | 134 | M 18 | 485 | 170.000 | 1.310 | 190 | 145 | 32 |
| 280 | x | 370 | 136 | 156 | M 20 | 690 | 217.000 | 1.550 | 189 | 143 | 46 |
| 300 | x | 390 | 136 | 156 | M 20 | 690 | 231.000 | 1.540 | 170 | 131 | 49 |