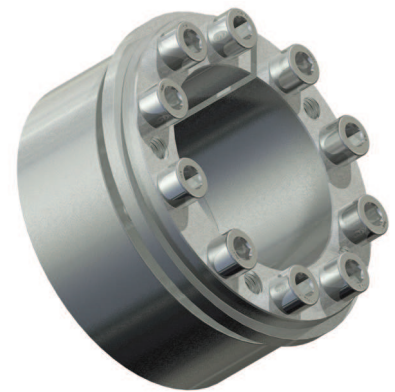
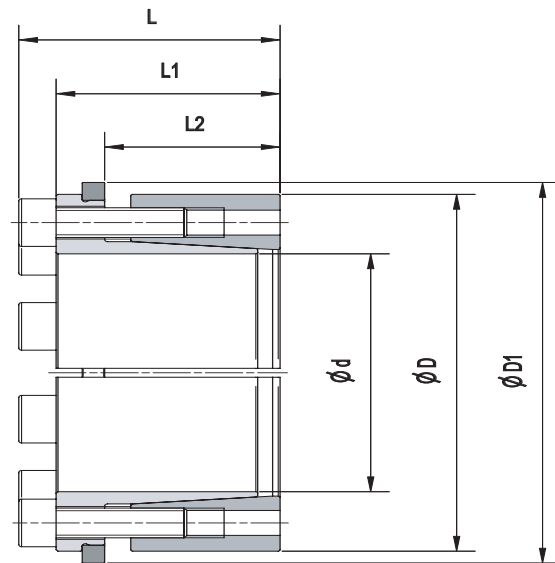


DIMENSIONS					SCREWS		PERFORMANCES					WEIGHT kg
d x D mm	L2 mm	L1 mm	L mm	D1 mm	size	Ma Nm	Mt Nm	Fax kN	Ps MPa	Ph MPa		
18 x 47	30,0	42,0	48,0	53,0	M6	11,8	164	18,2	50	19	0,4	
19 x 47	30,0	42,0	48,0	53,0	M6	11,8	173	18,2	47	19	0,4	
20 x 47	30,0	42,0	48,0	53,0	M6	11,8	182	18,2	45	19	0,4	
22 x 47	30,0	42,0	48,0	53,0	M6	11,8	201	18,2	41	19	0,4	
24 x 50	31,0	43,0	49,0	56,0	M6	11,8	219	18,2	37	18	0,4	
25 x 50	31,0	43,0	49,0	56,0	M6	11,8	228	18,2	36	18	0,4	
28 x 55	31,0	43,0	49,0	61,0	M6	11,8	255	18,2	32	16	0,5	
30 x 55	31,0	43,0	49,0	61,0	M6	11,8	274	18,2	30	16	0,5	
32 x 60	31,0	43,0	49,0	66,0	M6	11,8	389	24,3	37	20	0,5	
35 x 60	31,0	43,0	49,0	66,0	M6	11,8	426	24,3	34	20	0,5	
38 x 65	31,0	43,0	49,0	71,0	M6	11,8	462	24,3	31	18	0,6	
40 x 65	31,0	43,0	49,0	71,0	M6	11,8	486	24,3	30	18	0,6	
42 x 75	35,5	50,5	58,5	81,0	M8	28,7	711	33,9	34	19	1,0	
45 x 75	35,5	50,5	58,5	81,0	M8	28,7	762	33,9	32	19	0,9	
48 x 80	35,5	50,5	58,5	86,0	M8	28,7	813	33,9	30	18	1,0	
50 x 80	35,5	50,5	58,5	86,0	M8	28,7	847	33,9	29	18	1,0	
55 x 85	35,5	50,5	58,5	91,0	M8	28,7	1.242	45,2	35	23	1,1	
60 x 90	35,5	50,5	58,5	96,0	M8	28,7	1.355	45,2	32	21	1,1	
63 x 95	35,5	50,5	58,5	101,0	M8	28,7	1.423	45,2	30	20	1,3	
65 x 95	35,5	50,5	58,5	101,0	M8	28,7	1.468	45,2	29	20	1,2	
70 x 110	47,0	60,0	70,0	117,0	M10	58,0	2.256	64,5	29	19	2,3	
75 x 115	47,0	60,0	70,0	122,0	M10	58,0	2.417	64,5	27	18	2,5	
80 x 120	47,0	60,0	70,0	127,0	M10	58,0	2.578	64,5	26	17	2,6	
85 x 125	47,0	60,0	70,0	132,0	M10	58,0	3.131	73,7	28	19	2,7	
90 x 130	47,0	60,0	70,0	137,0	M10	58,0	3.315	73,7	26	18	2,9	
95 x 135	47,0	60,0	70,0	142,0	M10	58,0	4.374	92,1	31	22	3,0	
100 x 145	53,0	71,0	83,0	153,0	M12	100,0	4.728	94,6	26	18	4,4	
110 x 155	53,0	71,0	83,0	163,0	M12	100,0	5.200	94,6	24	17	4,7	
120 x 165	53,0	71,0	83,0	173,0	M12	100,0	6.483	108,1	25	18	5,0	
130 x 180	53,0	71,0	83,0	188,0	M12	100,0	8.780	135,1	29	21	6,0	



Code

- Ma: screws tightening torque
- Mt: transmissible torque, with Fax=0 kN
- Fax: transmissible axial load, with Mt=0 Nm
- Ps: contact pressure on shaft
- Ph: contact pressure in hub bore

Features

- Transmissible torque from 164 to 8.780 Nm
- Self-centering, self-locking
- Fixed axial hub position during tightening
- Single taper design
- Fitting length larger than MAV 1061
- Lubrication: food grade oil FDA approved class H-1
- Tolerances: shaft h8; hub bore H8
- Shaft and hub bore surface finish $0.8 \leq Ra \leq 3.2 \mu\text{m}$

Composition

- Slotted inner ring, with integrated push-off tapped holes
- Slotted outer ring
- Spacer ring
- Set of socket head cap screws, grade A4-80

Listed performances are valid as long as shaft and hub are made of stainless steel. Should these parts be made of different materials, listed values might not apply. Please consult MAV Technical Dept. for advise.

Information subject to change without prior notification, © MAV S.p.A.